

Coil Deck - e1

(for ISO Dry Van/ Open Top Container)

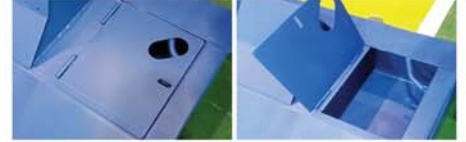
External Length	5,875 mm	
Width	2,320 mm	
Height	620 mm	
Max. Gross Weight	32,000 kg	70,540 lbs
Tare Weight	2,000 kg	3,520 lbs
Max. Payload	30,000 kg	66,100 lbs
Concentrated Load	30,000 kg	66,100 lbs
Deck Length	5,640 mm	
Coil DIA.	900 ~ 2010 mm	



● Lashing Point (46 points)



● Rubber Cushion



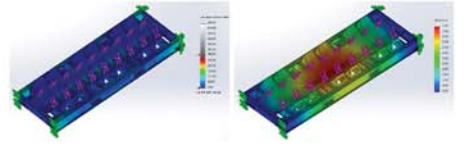
● Tool Box



● Paint 3 Layers (30/40/30 D.F.T 110 μm)



● Sliding Guide Rail (4.0t)



● FEA (Finite-Element Analysis)



● 40mm Thick Lock Bar (Spring Assist Type)



● ISO Fork Lift Pocket (@ Rear & Sides)



● Stackable Design (5 Stacks 2020mm H)

※ This specification is subject to change without any notice to improve the quality.

Safety, Strength, Speed

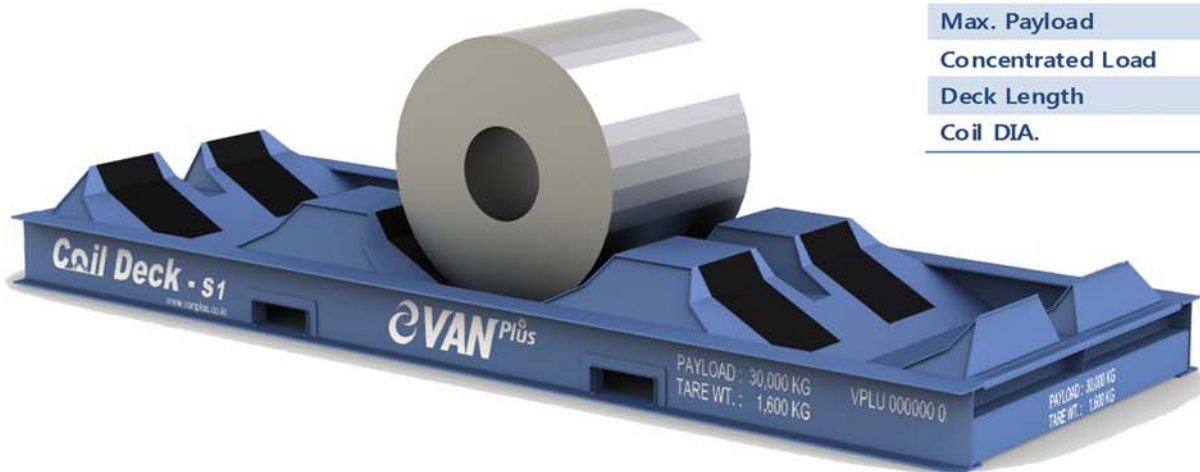
#3811, Hyundai 41 Tower, 293 Mokdongdong-Ro, Yangchun-Gu, Seoul 158-723, KOREA

Tel : 82.2.2168.3742 Fax : 82.2.2168.3744 E-mail : sales@vanplus.co.kr <http://www.vanplus.co.kr>

Coil Deck - s1

(for Side Open Container)

External	Length	5,600 mm	
	Width	2,100 mm	
	Height	567 mm	
Max. Gross Weight	31,600 kg	69,600 lbs	
Tare Weight	1,600 kg	3,520 lbs	
Max. Payload	30,000 kg	66,100 lbs	
Concentrated Load	30,000 kg	66,100 lbs	
Deck Length	1,918 mm X 3 EA		
Coil DIA.	900 ~ 2010 mm		



※ This specification is subject to change without any notice to improve the quality.

Coil Deck - c1

(for Inland Trucking)

External	Length	6,058 mm	
	Width	2,438 mm	
	Height	614 mm	
Max. Gross Weight	32,150 kg	70,880 lbs	
Tare Weight	2,150 kg	4,740 lbs	
Max. Payload	30,000 kg	66,100 lbs	
Concentrated Load	30,000 kg	66,100 lbs	
Deck Length	5,821 mm		
Coil DIA.	900 ~ 2010 mm		



※ This specification is subject to change without any notice to improve the quality.

Coil Deck - Light c1

(for Inland Trucking)

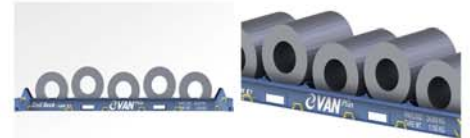
External	Length	6,058 mm	
	Width	2,438 mm	
	Height	565 mm	
Max. Gross Weight	25,150 kg	55,445 lbs	
Tare Weight	1,150 kg	2,535 lbs	
Max. Payload	24,000 kg	52,910 lbs	
Stack Coil	Dia.	Ø800 ~ 1,500 mm	
	Width	Max. 1,500 mm	
Stacking	7 EA (H : 2,205 mm)		



● Lashing Point (26 points)



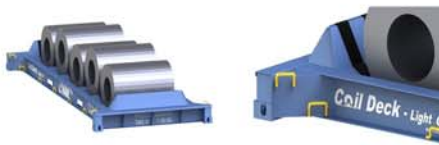
● Rubber Cushion



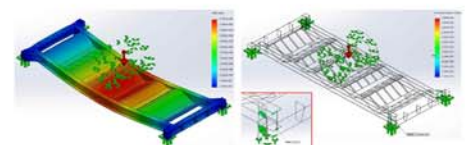
● Fork Lift Pocket (For Empty Only)



● Stackable Design (7 Stacks 2,205mm H)



● ISO Corner Casting (Fixing to Chassis Twist Lock)



● FEA (Finite-Element Analysis)



● Loading 3 coils (MAX. Payload. 24 Ton)



● Loading 5 coils (MAX. Payload. 24 Ton)

※ This specification is subject to change without any notice to improve the quality.